



DATUM **D**

Custom Flat Metal Canopies by

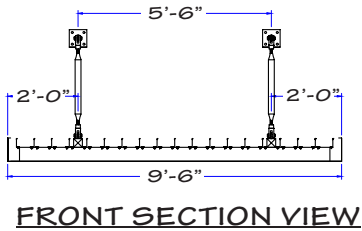
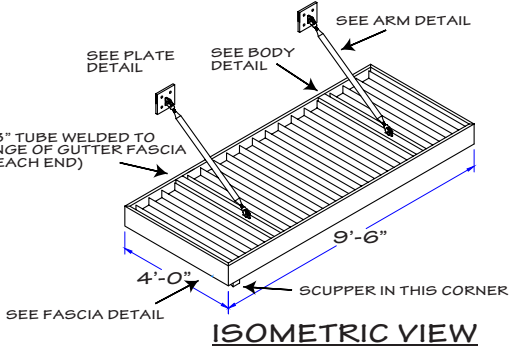
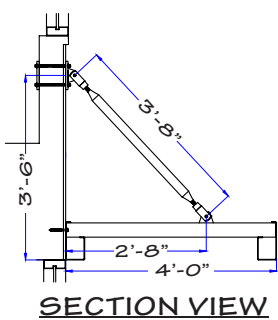
CARROLL
ARCHITECTURAL SHADE



Create an architectural statement with Datum flat metal canopies showcasing your own unique style and character while providing energy saving protection from the elements.



Each Datum Metal Canopy is designed and fabricated with exacting standards for quality and craftsmanship.





Carroll Architectural Shade offers more product choices and customizations, including a variety of profiles, shapes and curves. We work with you to make your commercial structures top of the line both structurally and aesthetically.



**All aluminum rust free components.
Fully welded gutters to eliminate leaks.
Custom fabrication available.**

SINCE 1958

CARROLL
ARCHITECTURAL SHADE

2955 Frederick Avenue Baltimore, MD 21223
410.945.0022 / e-mail: info@carrollas.com / www.carrollas.com

SPECIFICATIONS

Flat Metal Canopy with Hanger Rods

1.01 DESCRIPTION OF WORK

A. Work in this section includes furnishing and installation of Flat Metal Canopies as manufactured by Datum.

B. Related Items and Considerations

1. Plan for proper attachment to wall construction including fastener type, size and locations. Coordinate for blocking or additional interior wall structure as required to support canopy loads.

1.02 STANDARD

A. All work and materials shall conform to the following standards.

1. ASTM
2. American Welding Society
3. National Fire Protection Agency
4. National Association of Architectural Metal Manufacturers
5. AAMA2064

B. Performance requirements

1. Canopy must conform to local building codes.

C. Determine if specific load requirements have been established for canopies and if stamped calculations are required for location in which canopy is installed.

D. Installer Qualifications: Must have at least 10 years experience in the installation of canopies, of both the type and installation methods similar to those described in this section.

2.0 MANUFACTURERS

A. Datum Metal Products, 5107 N. Australian Ave., West Palm Beach, FL 33407 954-541-9745 www.datumwholesale.com

B. Carroll Architectural Shade, (approved installer)

2955 Frederick Ave., Baltimore, MD 21223 410-945-0022

www.carrollas.com

2.01 MATERIALS

A. Body shall be:

1. 6005A T61 extruded aluminum interlocking pans minimum .065" thick

B. Fascia to be extruded aluminum

1. 6063 T6 8" tall x 4" extruded aluminum gutter with minimum wall thickness of .125"

C. Optional - Combinations of above fascia's are allowable so long as extruded gutter is used in conjunction with the solid decking to allow for water management.

D. Hanger rods to be 6061 T6 Sch.40 aluminum pipe connected to milled 6061 T6 aluminum clevis or fixed terminals with 3/8" all thread.

E. All hardware shall be noncorrosive, non-staining bolts, shims and accessory items – minimum 304 stainless steel.

F. Mounting hardware & mechanical pins shall not be less than 3/8" thick stainless steel complying with ASTM A193.

G. Self-tapping screws (attach pans to gutter fascia) shall be #12x 3/4" hex head.

2.03 FRAME FINISH: Powder Coat Finish

A. General

1. Standard powder coat finish to be polyester powder coated to meet the performance criteria of the AAMA 2604 coating specification. To be powder coated with "Tiger Drylac Polyester TGIC" Series 49 www.tigerdrylac.com

B. Awnings must be powder coated as a single unit and not in pieces to be assembled.

2.04 FABRICATION

A. Aluminum Components

1. To be joined by welding in compliance with ASW standards. All members to be cut to form tight joints with no gaps.
2. Use clean, straight, smooth material that comply with approved plans and shop drawings.

B. Hanger Hardware

1. Wall plates to be precision machined. Custom wall plates shall be fabricated from 6061 ALUMINUM PLATE.
2. Hanger rods to be prefabricated, stainless steel, and all aluminum arm assemblies.

C. Decking

1. Decking panels to be prefabricated, installed by the manufacturer and powder coated as single units for water tightness.
2. Decking to be ALUMINUM only. Steel is not acceptable.
3. Decking panels to be screwed to supporting structure with #12 x 3/4" stainless steel tek screws.

D. Two 2" Drainage holes to be preinstalled by manufacturer. Holes may be located at the front or rear corners of the structure.

2.05 WARRANTY

A. Canopy

1. Manufacturer shall warrant all manufacture supplied components against defects in structural labor and materials for a period of ten (10) years commencing on the date of substantial completion.

B. Installation

1. Installer shall warrant entire scope of installation including connection of canopies to building, caulking or flashing of canopies and installation of decking panels, against defects in all labor and materials for a period of one year commencing on the date of substantial completion.

3.0 EXECUTION

3.1 INSPECTION

A. Installer shall confirm dimensions prior to fabrication.

B. Confirm surrounding area is ready for canopy installation.

3.1 INSTALLATION

A. Install canopies in positions indicated in manufacturer's shop drawings.

B. Installation shall be structurally sound, level, plumb and leak free.

C. Installer to protect finish during handling and erection and complete installation leaving canopies in clean condition.

CARROLL
ARCHITECTURAL SHADE

2955 Frederick Avenue Baltimore, MD 21223

410.945.0022 / e-mail: info@carrollas.com / www.carrollas.com



Member of
AMERICAN
INSTITUTE OF
ARCHITECTS

Visit www.carrollas.com to download specifications.